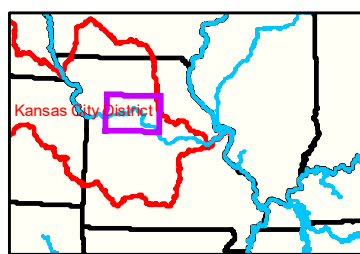
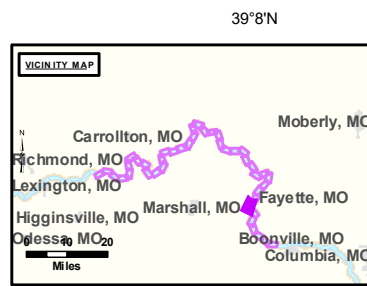


Notes

Glasgow Gage = 18.6 at time of collection 25 May 2021"

Gage_L

RM 216.7
05252021
WS 597.8



LEGEND

< 8	< 8 ft	Green Passing	Green	AIS Green CAN
8 - 9	8 - 9 ft	Red Passing	Red	AIS Red NUN
9 - 9.5	9 - 10 ft	Green Crossing	Green CAN	Red NUN
9.5 - 10	10 - 12 ft	Red Crossing	Junction	
10 - 12	River Mile			
12 - 14	Sailing Line			
14 - 16	BSNP Structure			
> 16	Levee			

Scale: 0 to 2,500 Feet

Vertical Datum: Soundings are shown in feet and indicated depths are referenced to water surface at time of collection.



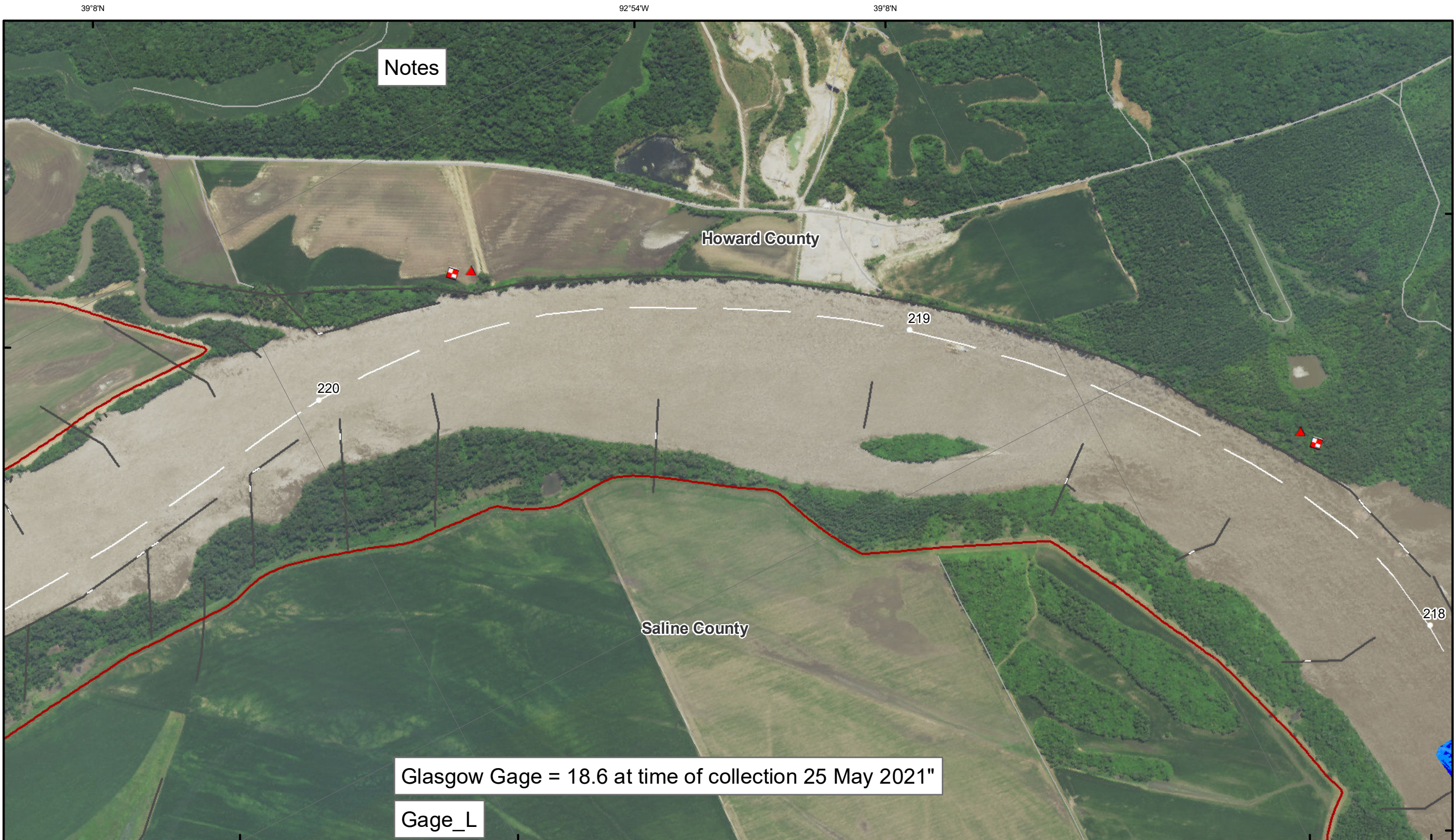
DISCLAIMER: The U.S. Army Corps of Engineers (USACE) provides this information for informational purposes only. It is not intended to be used for legal or other purposes. The USACE does not warrant the accuracy, completeness, or timeliness of the information provided. The USACE is not responsible for any errors or omissions in this information. The user assumes all liability for any use of this information.

KANSAS CITY DISTRICT MISSOURI RIVER AREA OFFICE	
Submitted By:	MIA/O
Reviewed By:	MIA/O
Approved By:	MIA/O

Survey Information
 MO_03_LMR
 MO_03_LMR_20210525_CS_216_8_217_8_SORT
 25 May 2021

Sheet Number
7 of 42

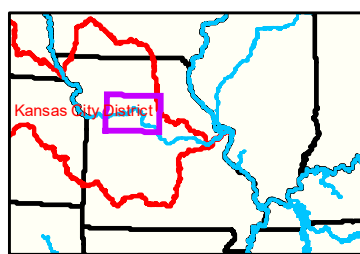
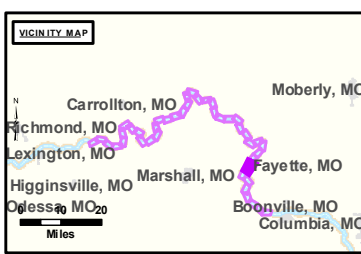
NOTES:
 Horizontal Coordinate System: World Geodetic System of 1984 (WGS84), projected to the Universal Transverse Mercator (UTM) Zone 15 North. Distance units in U.S. Survey Feet.
 Vertical Datum: Soundings are shown in feet and indicated depths are referenced to water surface at time of collection.
 The information depicted on this map represents the results of a survey conducted on the date indicated and can only be considered to represent the general condition existing at that time.
 The location of navigation aids are based on and provided by the U.S. Coast Guard.



Notes

Glasgow Gage = 18.6 at time of collection 25 May 2021

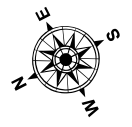
Gage_L



LEGEND

< 8	< 8 ft	Green Passing	Green	AIS Green CAN
8 - 9	8 - 9 ft	Red Passing	Red	AIS Red NUN
9 - 9.5	9 - 10 ft	Green Crossing	Green CAN	Red NUN
9.5 - 10	10 - 12 ft	Red Crossing	Junction	
10 - 12	River Mile			
12 - 14	Sailing Line			
14 - 16	BSNP Structure			
> 16	Levee			

Scale: 0 312.5 625 937.5 1,250 2,500 Feet



NOTES:
 Horizontal Coordinate System:
 World Geodetic System of 1984 (WGS84), projected to the Universal Transverse Mercator (UTM) Zone 15 North.
 Distance units in U.S. Survey Feet

Vertical Datum:
 Soundings are shown in feet and indicated depths are referenced to water surface at time of collection.

The information depicted on this map represents the results of a survey conducted on the date indicated and can only be considered to represent the general condition existing at that time.

The location of navigation aids are based on and provided by the U.S. Coast Guard.



DISCLAIMER: The U.S. Army Corps of Engineers provides this information for informational purposes only. It is not intended for use in any legal proceeding or as a basis for any claim. The Corps makes no warranty, expressed or implied, for the accuracy, completeness, or timeliness of the information. The user assumes all liability for any use of this information. The U.S. Army Corps of Engineers is not responsible for any errors or omissions in this information. The U.S. Army Corps of Engineers is not liable for any damages, including consequential damages, arising from the use of this information. The U.S. Army Corps of Engineers is not responsible for any loss of data or information. The U.S. Army Corps of Engineers is not responsible for any loss of profit or business. The U.S. Army Corps of Engineers is not responsible for any loss of income. The U.S. Army Corps of Engineers is not responsible for any loss of reputation. The U.S. Army Corps of Engineers is not responsible for any loss of opportunity. The U.S. Army Corps of Engineers is not responsible for any loss of time. The U.S. Army Corps of Engineers is not responsible for any loss of money. The U.S. Army Corps of Engineers is not responsible for any loss of property. The U.S. Army Corps of Engineers is not responsible for any loss of anything else.

KANSAS CITY DISTRICT MISSOURI RIVER AREA OFFICE	
Submitted By:	MRAO
Reviewed By:	MRAO
Checked By:	MRAO

Survey Information
 MO_03_LMR
 MO_03_LMR_20210525_CS_216_8_217_8_SORT
 25 May 2021

Sheet Number
 8 of 42